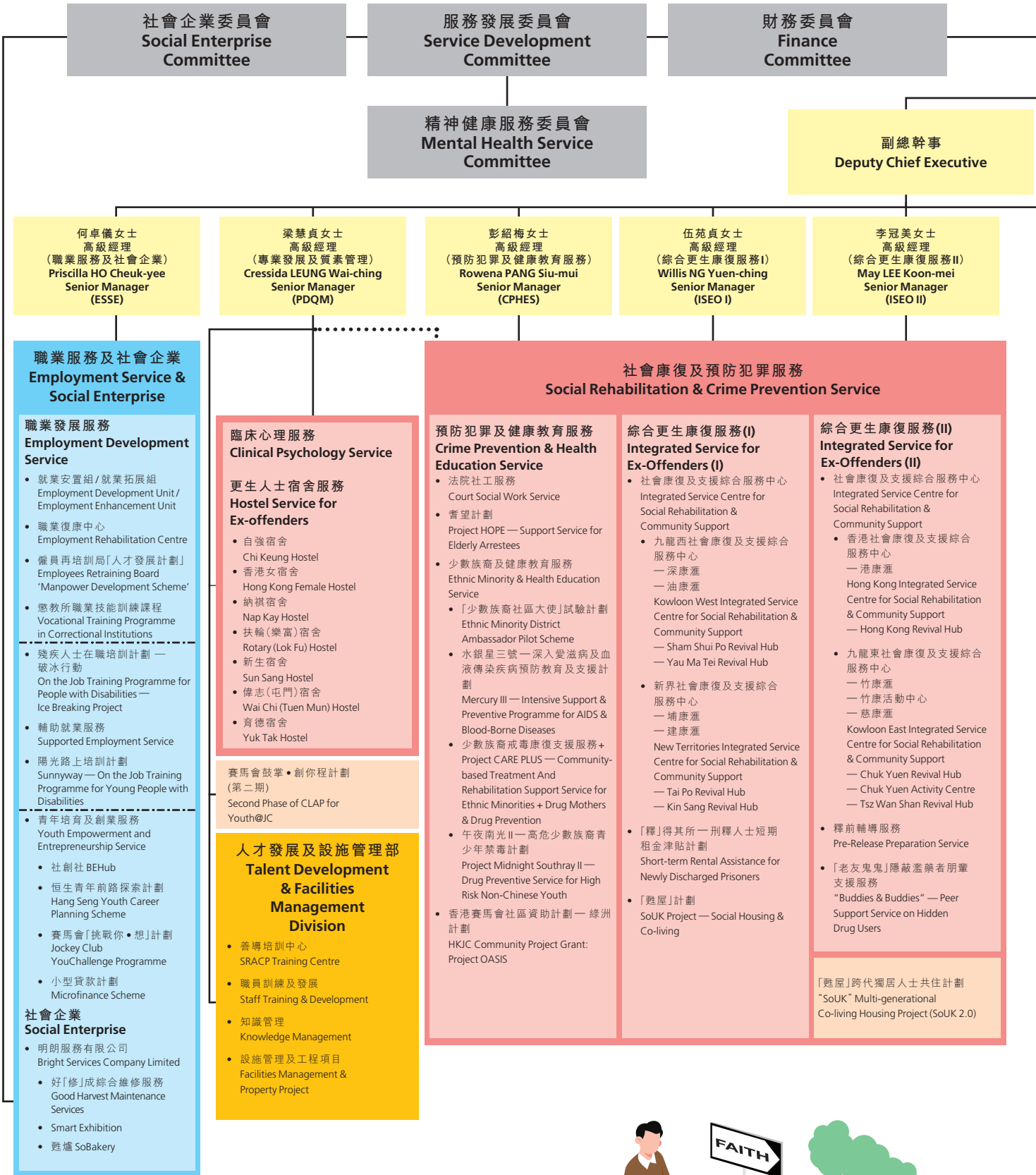


# 組織架構 (2020年9月7日生效)

## Organisation Chart (Effective 7 September 2020)



社會企業委員會  
Social Enterprise Committee

服務發展委員會  
Service Development Committee

財務委員會  
Finance Committee

精神健康服務委員會  
Mental Health Service Committee

副總幹事  
Deputy Chief Executive

何卓儀女士  
高級經理  
(職業服務及社會企業)  
Priscilla HO Cheuk-ye  
Senior Manager  
(ESSE)

梁慧貞女士  
高級經理  
(專業發展及質素管理)  
Cressida LEUNG Wai-ching  
Senior Manager  
(PDQM)

彭紹梅女士  
高級經理  
(預防犯罪及健康教育服務)  
Rowena PANG Siu-mui  
Senior Manager  
(CPHES)

伍苑貞女士  
高級經理  
(綜合更生康復服務 I)  
Willis NG Yuen-ching  
Senior Manager  
(ISEO I)

李冠美女士  
高級經理  
(綜合更生康復服務 II)  
May LEE Koon-mei  
Senior Manager  
(ISEO II)

**職業服務及社會企業  
Employment Service & Social Enterprise**

**職業發展服務  
Employment Development Service**

- 就業安置組 / 就業拓展組  
Employment Development Unit /  
Employment Enhancement Unit
- 職業復康中心  
Employment Rehabilitation Centre
- 僱員再培訓局「人才發展計劃」  
Employees Retraining Board  
'Manpower Development Scheme'
- 懲教所職業技能訓練課程  
Vocational Training Programme  
in Correctional Institutions
- 殘疾人士在職培訓計劃 —  
破冰行動  
On the Job Training Programme for  
People with Disabilities —  
Ice Breaking Project
- 輔助就業服務  
Supported Employment Service
- 陽光路上培訓計劃  
Sunnyway — On the Job Training  
Programme for Young People with  
Disabilities
- 青年培育及創業服務  
Youth Empowerment and  
Entrepreneurship Service
- 社創社 BEHub
- 恒生青年前路探索計劃  
Hang Seng Youth Career  
Planning Scheme
- 賽馬會「挑戰你·想」計劃  
Jockey Club  
YouChallenge Programme
- 小型貸款計劃  
Microfinance Scheme

**社會企業  
Social Enterprise**

- 明朗服務有限公司  
Bright Services Company Limited
- 好「修」成綜合維修服務  
Good Harvest Maintenance  
Services
- Smart Exhibition
- 麩爐 SoBakery

**臨床心理服務  
Clinical Psychology Service**

**更生人士宿舍服務  
Hostel Service for Ex-offenders**

- 自強宿舍  
Chi Keung Hostel
- 香港女宿舍  
Hong Kong Female Hostel
- 納祺宿舍  
Nap Kay Hostel
- 扶輪(樂富)宿舍  
Rotary (Lok Fu) Hostel
- 新生宿舍  
Sun Sang Hostel
- 偉志(屯門)宿舍  
Wai Chi (Tuen Mun) Hostel
- 育德宿舍  
Yuk Tak Hostel

賽馬會鼓掌·創你程計劃  
(第二期)  
Second Phase of CLAP for  
Youth@JC

**人才發展及設施管理部  
Talent Development & Facilities Management Division**

- 善導培訓中心  
SRACP Training Centre
- 職員訓練及發展  
Staff Training & Development
- 知識管理  
Knowledge Management
- 設施管理及工程項目  
Facilities Management &  
Property Project

**社會康復及預防犯罪服務  
Social Rehabilitation & Crime Prevention Service**

**預防犯罪及健康教育服務  
Crime Prevention & Health Education Service**

- 法院社工服務  
Court Social Work Service
- 耆望計劃  
Project HOPE — Support Service for  
Elderly Arrestees
- 少數族裔及健康教育服務  
Ethnic Minority & Health Education  
Service
- 「少數族裔社區大使」試驗計劃  
Ethnic Minority District  
Ambassador Pilot Scheme
- 水銀星三號 — 深入愛滋病及血  
液傳染疾病預防教育及支援計  
劃  
Mercury III — Intensive Support &  
Preventive Programme for AIDS &  
Blood-Borne Diseases
- 少數族裔戒毒康復支援服務 +  
Project CARE PLUS — Community-  
based Treatment And  
Rehabilitation Support Service for  
Ethnic Minorities + Drug Mothers  
& Drug Prevention
- 午夜南光 II — 高危少數族裔青  
少年禁毒計劃  
Project Midnight Southray II —  
Drug Preventive Service for High  
Risk Non-Chinese Youth
- 香港賽馬會社區資助計劃 — 綠洲  
計劃  
HKJC Community Project Grant:  
Project OASIS

**綜合更生康復服務 (I)  
Integrated Service for Ex-Offenders (I)**

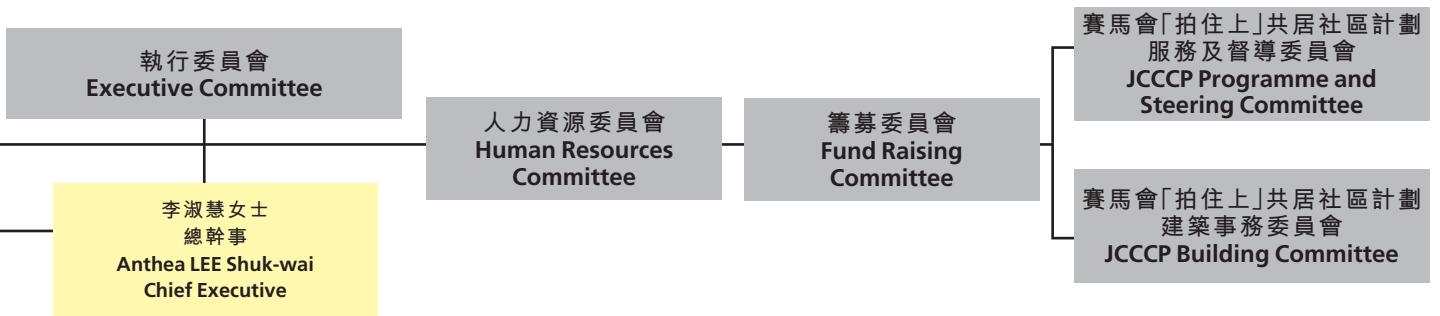
- 社會康復及支援綜合服務中心  
Integrated Service Centre for  
Social Rehabilitation &  
Community Support
- 九龍西社會康復及支援綜合  
服務中心  
— 深康滙  
— 油康滙  
Kowloon West Integrated Service  
Centre for Social Rehabilitation &  
Community Support
- Sham Shui Po Revival Hub  
— Yau Ma Tei Revival Hub
- 新界社會康復及支援綜合  
服務中心  
— 埔康滙  
— 建康滙  
New Territories Integrated Service  
Centre for Social Rehabilitation &  
Community Support
- Tai Po Revival Hub  
— Kin Sang Revival Hub
- 「釋」得其所 — 刑釋人士短期  
租金津貼計劃  
Short-term Rental Assistance for  
Newly Discharged Prisoners
- 「麩屋」計劃  
SoUK Project — Social Housing &  
Co-living

**綜合更生康復服務 (II)  
Integrated Service for Ex-Offenders (II)**

- 社會康復及支援綜合服務中心  
Integrated Service Centre for  
Social Rehabilitation &  
Community Support
- 香港社會康復及支援綜合  
服務中心  
— 港康滙  
Hong Kong Integrated Service  
Centre for Social Rehabilitation &  
Community Support  
— Hong Kong Revival Hub
- 九龍東社會康復及支援綜合  
服務中心  
— 竹康滙  
— 竹康活動中心  
— 慈康滙  
Kowloon East Integrated Service  
Centre for Social Rehabilitation  
& Community Support  
— Chuk Yuen Revival Hub  
— Chuk Yuen Activity Centre  
— Tsz Wan Shan Revival Hub
- 釋前輔導服務  
Pre-Release Preparation Service
- 「老友鬼鬼」隱蔽濫藥者朋輩  
支援服務  
"Buddies & Buddies" — Peer  
Support Service on Hidden  
Drug Users

「麩屋」跨代獨居人士共住計劃  
"SoUK" Multi-generational  
Co-living Housing Project (SoUK 2.0)





研究及發展部  
Research & Development Division

- 委員會 Committee
- 機構管理團隊 Agency Management Team
- 總辦事處 Head Office
- 社區教育及義工服務 Community Education & Volunteer Service
- 職業服務及社會企業 Employment Service & Social Enterprise
- 精神健康服務 Mental Health Service
- 社會康復及預防犯罪服務 Social Rehabilitation & Crime Prevention Service
- 特別服務計劃 Specialised Project
- 行政管理/支援 Administrative Management/Support
- ..... 專業發展及質素管理 Professional Development & Quality Management
- \* 重建中 Under redevelopment

